

==CORDON

Cordon RP Dock

**Movable Wraparound
Radiation Protection Dock**

Care for Care Givers

**Movable
Wraparound**

**Convertible
Shape**

**Height
Adjustment**

Make In India

**Quality and
best of services**

**International
Standards**

Cordon Movable Wraparound RP Dock

The Cordon RP (radiation protection) Dock an innovative solution developed by Horizon Healthcare Solutions for maximum protection in Cath/ DSA lab.

Lead curtain which is permanently fixed with Cath table is not so effective against protection. In these circumstances, Cordon RP Dock is a mobile solution that provide optimal radiation protection from Feet to Chest Heights.



During Interventional procedures by reducing the weight of the apron significantly reduces the physical stress of the operator. "X-ray protective aprons rated with a lead equivalence of Pb 0.50 mm could now be reduced to a lead equivalence of Pb 0.35 mm/ 0.25 mm.

Why Dock is important/Mandatory ?

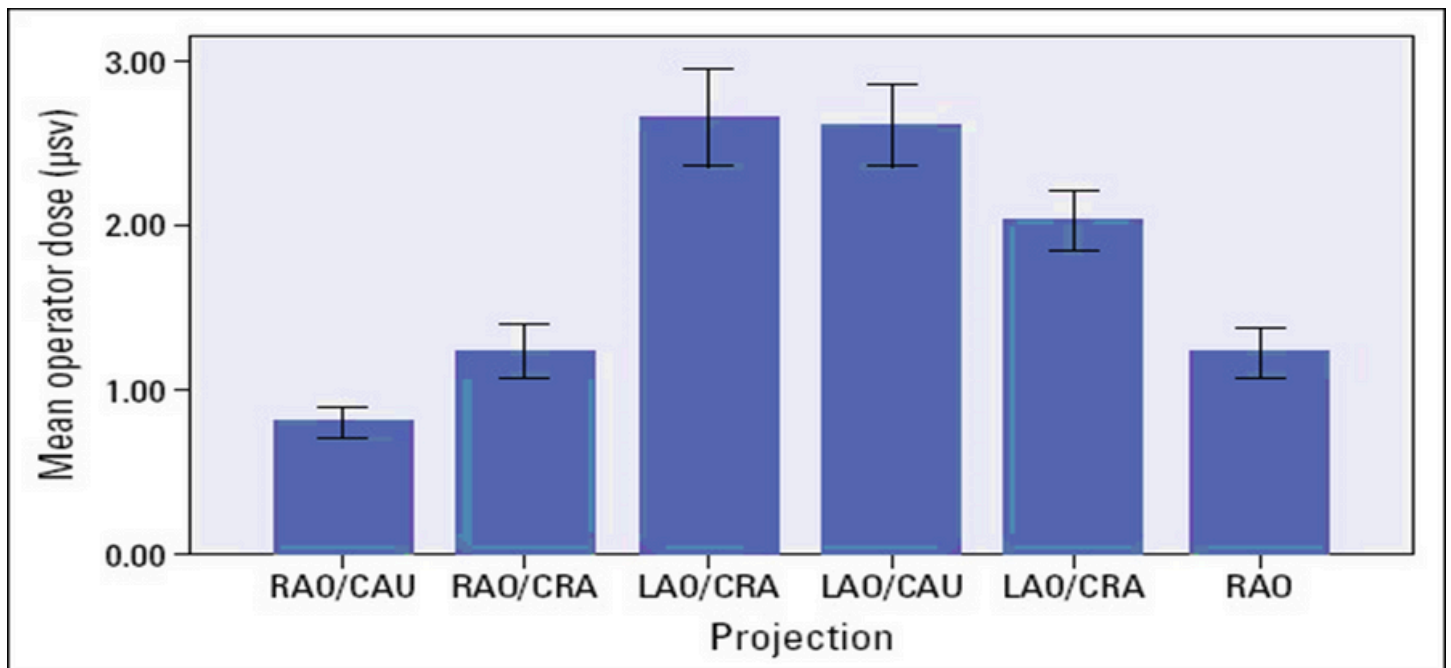
The CORDON RP dock shielding system permits users to wear significantly lighter radiation protection aprons. During long procedures heavy aprons affect the joints and spine.

Radiation exposure is maximum in an area between the feet and chest. The new Movable Wraparound RP Dock with its lead equivalent of Pb 0.50mm provides the physician with up to 99% protection during LAO/RAO/AP/Lateral view

The design of dock system is developed to keep the operator close to the patient, with no catheter access restrictions, etc., high mobility throughout the procedures.

Conventional table shielding does not provide full protection, does not protect during LAO view and, even some time obstruct of C-arm motion.

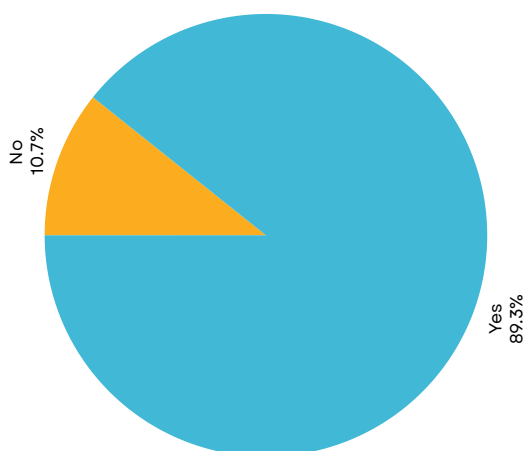
Comparison of operator radiation dose (μsv) in different projections



CAU - caudal; CRA - cranial; **LAO - left anterior oblique**; RAO - right anterior oblique; TFA - trans-femoral approach; TRA - trans-radial approach

Beam projections and radiation exposure in trans radial and transfemoral approaches during coronary angiography Ali Tarighatnia,^{*,**},¹ Amirhossien Mohammadalian,¹ Morteza Ghojaziade,^{***} Leili Pourafkari,^{****} and Alireza Farajollahi^{*****}

Pie chart depicting the percentage of staff who felt that their back pain was caused or contributed by lead apron use.



Evaluation of Back Pain and Lead Apron Use Among Staff
Stefanie Andrew, Mohamed R. Abdelmonem, Suraj Kohli, Harshad Dabke

1. It has been estimated that a 15-pound lead apron can exert a load of 300 pounds per square inch on the intervertebral discs.”¹ – Society of Interventional Radiology
2. 52% of radiologists reported lower back pain²
3. 60% of interventional radiologists reported neck and lower back pain³
4. More than 50% of interventional cardiologists required treatments for spine symptoms⁴

[https://www.jvir.org/article/S1051-0443\(16\)30714-X/fulltext#s0035](https://www.jvir.org/article/S1051-0443(16)30714-X/fulltext#s0035)
[https://www.jvir.org/article/S1051-0443\(16\)30714-X/fulltext#s0035](https://www.jvir.org/article/S1051-0443(16)30714-X/fulltext#s0035)
[https://www.jvir.org/article/S1051-0443\(16\)30714-X/fulltext#s0035](https://www.jvir.org/article/S1051-0443(16)30714-X/fulltext#s0035)
<https://www.tctmd.com/news/your-interventional-career-scourge-your-musculoskeletal-system>

U-shaped



L-shaped

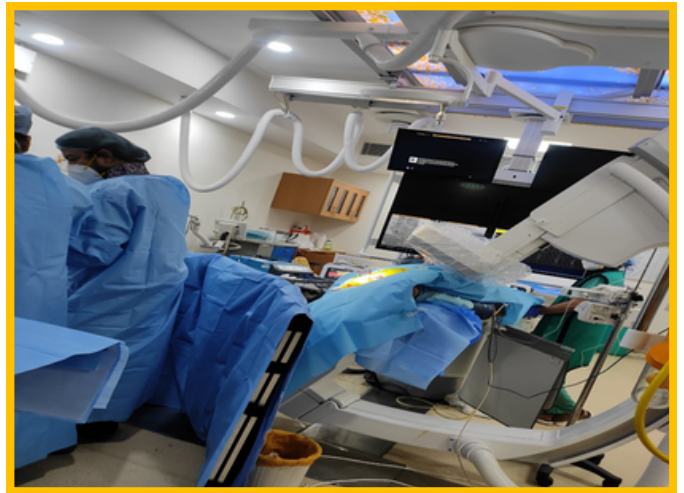


Have both the option in one system U –Shaped and and L -Shaped

With L-Shaped both Primary and secondary operator can work together with one dock system and adjust height as per need.

Together Both front and rear caster wheels have brakes. Left and right front caster wheels prevents “Movable Wraparound RP Dock ” from tilting forward.

The Cordon Dock of lead equivalence of 0.50 mmPb provides the physician up to 99% protection from the scattered radiation from feet to chest area.

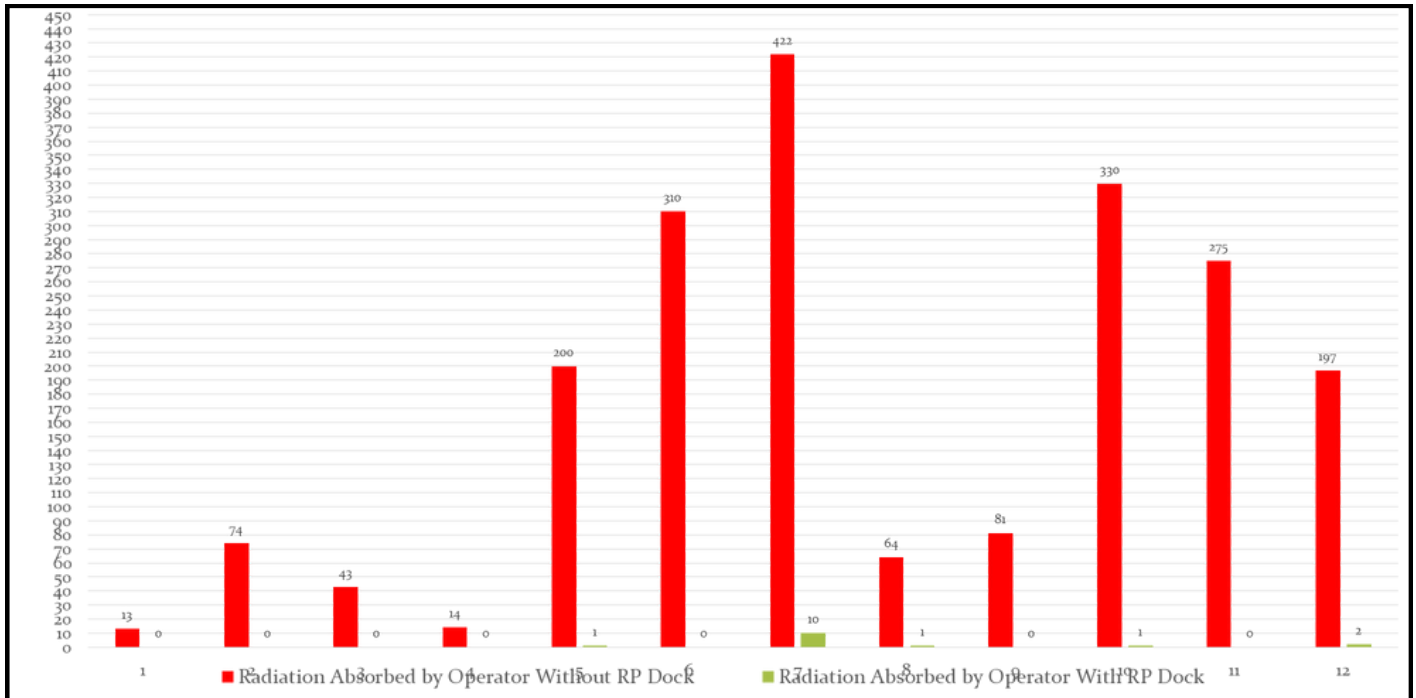


PRODUCT SPECIFICATIONS

Product Name	:	Movable Wraparound RP Dock
Model	:	CORDON RP Dock
Medical Device Classification	:	Class 1 electrical
Device Dimensions	:	562mm to 605mm (Depth), 600 mm to 1205mm (Length), 900mm to 1350 mm (Height)
Height Adjustment Range	:	Height can be adjusted with remote from floor level: 900mm-1350mm
Shape/ Design	:	U-Shaped and L -Shaped in one system
Weight Support Range/ Capacity	:	100 kg ~ 200 kg
Lead Equivalency	:	0.50 mm Pb (Front: 0.25mmPb and Back 0.25mmPb)
Certifications	:	BARC certified and tested, ISO, CE

Dock Attenuation Study during Live Procedures

Comparison of Radiation Absorbed without RP Dock & with RP Dock



x- Axis: Amount of Radiation Absorbed (in μsv)

y- Axis: Amount of Radiation (in μsv)

CORDON RP DOCK ADVANTAGES:

- 1 Provides maximum radiation protection to legs and back during LAO, RAO and AP view
- 2 Unrestricted arm mobility. Two designs in one system; U- shaped for single operator and L- Shaped for multiple operators.
- 3 Uninterrupted walking with the permissible shield space designed.
- 4 Move around freely according to one's own will.
- 5 Caster wheels prevents tilting.
- 6 Completely safe for use in mobile as well stationary positions.
- 7 Sterile disposable covers to put on for maintain hygiene during clinical procedure.
- 8 Operator can lead on to get relaxed during the procedures.



Access to our sales team
(M) +91-9958696832
Email: rajni@horizonhealthcare.in



horizon

= CORDON

**Manufactured By
Horizon Healthcare Solutions**

**B-113, Third Floor, DDA shed, Okhla
Industrial Area, Phase-1, New Delhi-110020**

Email: admin@horizonhealthcare.in

Ph.: 011-47597037, +91-9968440340

www.horizonhealthcare.org.in

BARC Certified

